



# PLASTEC VENTILATION, INC.

www.plastecvent.net Phone: 941-751-7596 Fax: 941-751-7598

## Submittal Data and Specifications

### Exhaust Guard / Inlet Guard

**Material of Construction and Temperature Limitation:**

Body and Protection Screen shall be made of Polypropylene. Recommended up to 140° F.

**Application:**

Designed to protect from fans moving parts and prevent entry of birds and animals. Mounting may be for fan Inlet and Outlet.

**Manufacturer:**

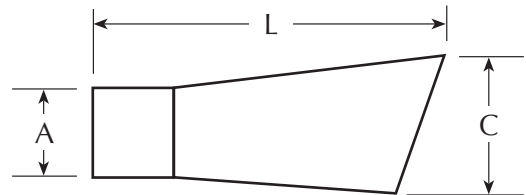
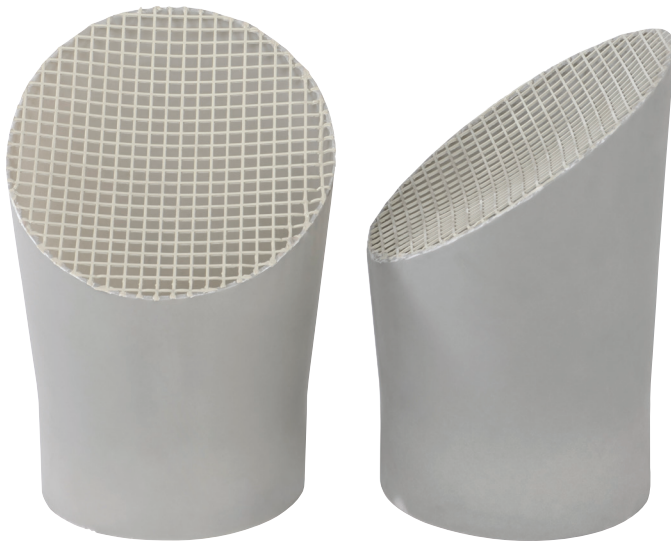
Shall be manufactured under the authority of Plastec Ventilation, Inc.

**Shall have the following Features and Benefits:**

- May be applied to Fan Inlet or Outlet
- Corrosion Resistant
- UV Treated

**Warranty:**

This equipment is warranted to be free from defects in material and workmanship for two years from date of original shipment. For the complete warranty agreement, see I, O & M on [www.plastecvent.net](http://www.plastecvent.net).



DIMENSIONAL DATA (inches)				
Fan Model	Part #	A	L	C
Plastec 15	EG125	4.92	9.00	6.15
Plastec 20	EG160	6.30	13.70	9.40
Plastec 25	EG200	7.87	14.00	9.45
Plastec 30	EG250	9.84	15.30	11.60
Plastec 35	EG315	12.40	15.52	14.70

PROJECT			ARCHITECT	
CONTRACTOR	DATE	SUBMITTED BY		ENGINEER
SPECIFICATION				
RELATED FAN POSITION	MODEL #	QTY	NOTES	